

Congratulations! You are installing the latest technology in automotive lighting in your classic truck. Here are some fun facts about your new LED taillights.

**Four Wire Connection** A four (4) wire connection with a dedicated turn signal wire is included. The onboard micro-controller will determine whether to flash the turn signal or not based on the particular situation (ie. brake on or off). Use of the fourth wire is optional depending on your vehicle.

**RapidFire™** Your stoplights are equipped with our new RapidFire™ stop light system. Every time the brakes are used your lights will flash three times in rapid succession followed by a constant on. This cycle is repeated every time the brakes are used. This valuable safety feature helps ensure your visibility to other drivers.

**Pulse width modulated tail lamp** The reduced intensity taillight now is a rapid pulsing of the LEDs on and off (on for 10% and off for 90% of the time). This pulsing repeats 2000 times per second. Since the LEDs are only on for 10% of the time, their life is increased. The DOT defined minimum brightness ratio of 7:1 between tail and stop light is exceeded to 10:1.

**Stainless Steel Hardware** All parts on your LED array are non-corrosive or stainless steel, including the hardware.

**Lifetime Warranty**

**Proudly MADE IN U.S.A.**

## 1967-72 Chevy Pick-Up Installation Instructions

1. **Disconnect Battery.** Do not skip this step. Also, do not try to "test" the LED array by connecting the leads directly to your battery. Permanent damage will occur to the LED array if you fail to heed these steps.
2. Remove the bulb socket from the back of the taillight.
3. Remove the lens from the taillight housing.
4. Take advantage of this time and clean or replace your taillight lenses. A clean, un-cracked lens will magnify your new LED lights.
5. Connect the LED array to the supplied harness. The green connector plugs into the back of the LED array. The green ground wire from the supplied harness will attach to the screw holding the housing to the body. (see photo)
6. Install rubber insulator. (see photo for details)
7. Pass the supplied harness wires through the old bulb hole and through the plastic wire guide. (see photo)
8. Attach the wire guide to the stud on the back of the LED array. Attach the 6 inch green wire to the stud on the back of the LED array. Install and tighten nut. Do not over tighten!
9. Cut the wires going to the tail/stop light bulb socket as near to the socket as possible.

10. **Driver's Side:** Using the supplied connectors, connect the taillight wire on your truck (brown wire) to the black wire on the supplied harness. If you do not have a dedicated turn signal wire, the yellow wire will not be connected to anything. To use the connector: See the "Quick and Easy" diagram.

11. Repeat by connecting the brake light wire (yellow wire) on your truck to the red wire on the supplied harness.

12. **Passenger Side:** Repeat connections on the passenger side. The brown wire on the truck goes to the black wire on the LED. The dark green wire on the truck goes to the red LED wire. If you do not have a dedicated turn signal wire, the yellow wire will not be connected to anything.





13. Reinstall taillight lenses/housings in your car.

14. Reconnect the battery.

15. Test both STOP and taillight functions.

16. Enjoy!

## QUICK & EASY!

- 1 Strip wire to 1/2" 
- 2 Twist 
- 3 Insert 
- 4 Hand tighten 

## TECHNICAL NOTE

Turn Signal Flashers: If both the tail and stop function both work after installation but the turn signals do not, replace the turn signal flasher with a new one of the same number.



513-607-5617

[sales@shiny-hiney.com](mailto:sales@shiny-hiney.com)

[www.shiny-hiney.com](http://www.shiny-hiney.com)

## PHOTO REFERENCE



Locate the rubber insulating pad; wipe area with rubbing alcohol before installing.



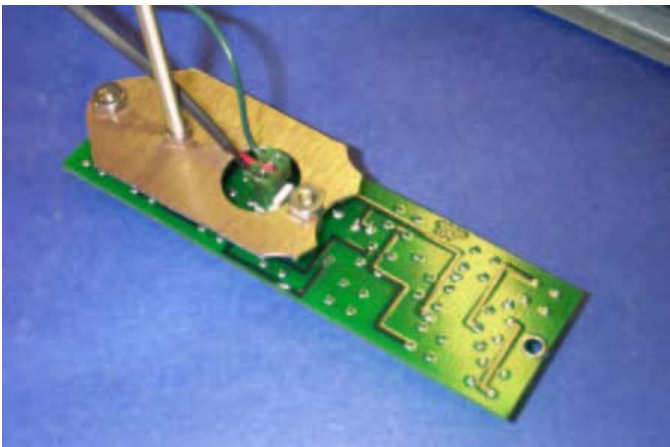
Pass the harness through the taillight housing and the supplied wire guide. The wire harness goes through the smaller hole.



Remove the backing from the rubber insulating pad and stick to housing as shown.



Install ground wire as shown. Be sure there is bare metal contacting the lug on the green wire. Very important!



Connect LED harness to LED array.



Position this nut 1-3/8" from the end of the screw.



Install nut. Make sure the nut is tight enough so the LED array will not turn, but not tight enough to deform the LED array.



Correct finished assembly.

